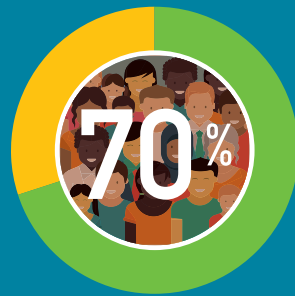


Tomorrow's city, today's challenge

By 2050, six billion people, around 70% of the world's population, will live in cities.



You would like more green space, less pollution, less waste and less traffic jams? Find out, in an interactive way, what we can do to make life better in the city of tomorrow.



Getting about more easily without polluting, producing less waste, eating better, finding new jobs, houses and schools that are more comfortable but use less energy... This exhibition is an invitation to try out new life habits.

Discover an experience that will make you love the city of tomorrow!
With your classmates, in a group, with your family.

We can change our city today!

At BELEXPO, you will have a number of missions to complete throughout our city's ten districts.

An interactive adventure

With your wristband as a travelling companion, you will be able to discover your missions and follow up on your visit on our website.

A visit that will make you want to make changes

On your page on our website, you will find more information and ideas for taking action at school or with your family. This will help you continue the missions you started in the exhibition and make real changes, to make our city better.

An educational tour

Are you an upper primary or lower secondary school teacher? The exhibition has activities that link to the school curriculum, to help you prepare and make the most of your visit.

For the young ones and even less young ones from 8 years of age
BELEXPO is an initiative of the Brussels-Capital Region aimed at raising awareness of environmental challenges in the city. It is part of an extensive programme of Environmental Education, which involves hundreds of schools in Brussels.



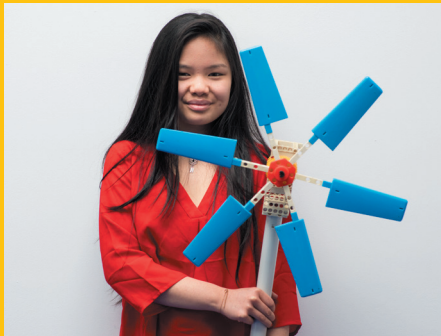
I grew some lettuce.
Now I'll do it at school.
— Sébastien, 11



By pedalling, I've arrived
in the future.
— Éric, 12



A job related to the environment?
I'd like that.
— Sun, 13



We designed a Good Food
school canteen project.
— Zoé et Christophe, 14



Now when we go shopping,
we look at labels.
— The Renson family



My students are motivated to continue
the adventure in class. Thanks to the
interactive visit, we were able to find
our missions and a series of appropriate
activities online.
— Najat · 5th class primary teacher





PRACTICAL INFORMATION



Opening hours and entrance fees

Find out our entrance fees on our website www.belexpo.brussels.

SCHOOL TIME

- Monday Closed
- Tuesday - Friday 9:00 am - 4:30 pm
- Saturday - Sunday 10:00 am - 5:00 pm

SCHOOL HOLIDAYS

- Monday Closed
- Tuesday - Sunday 10:00 am - 5:00 pm

ANNUAL CLOSURES

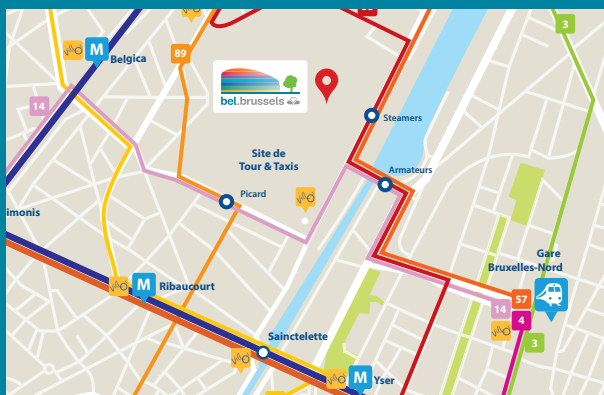
- 24-25 December · 31 December / 12 January · 01 May · 11 November
- 3rd week of June · 1st week of September

Groups (more than 10 people): compulsory booking

BELEXPO

Tour & Taxis site
 Avenue du Port 86c/3002
 1000 Brussels

Info: 02 775 75 75



www.belexpo.brussels

